



Government of India
Ministry of Earth Sciences
India Meteorological Department



Press Release

Date: 27th August, 2025

Time of Issue: 1330 hours IST

**Subject: i) Significant reduction in rainfall activity likely over Jammu & Kashmir from today, however, isolated heavy rainfall spell likely to continue over Northwest India during next 6-7 days.
ii) Heavy to very heavy rainfall likely over Odisha, Chhattisgarh, Coastal Andhra Pradesh, Telangana, Konkan, Madhya Maharashtra, Kerala and Coastal Karnataka till tomorrow, the 28th August with isolated extremely heavy rainfall over Coastal Karnataka & Telangana today, the 27th August, 2025.**

Realised weather during past 24 hours till 0830 hours IST of today, the 27th August, 2025:

- ❖ Exceptionally heavy rainfall recorded at isolated places over Jammu (Udhampur IAF-63 cm).
- ❖ Heavy to very heavy rainfall at some places with Extremely heavy rainfall (≥ 21 cm) has been recorded at isolated places over Jammu region, Telangana and Chhattisgarh.
- ❖ Very heavy rainfall (12-20 cm) has been recorded at isolated places over Goa, Lakshadweep and Odisha.
- ❖ Heavy rainfall (7-11 cm) has been recorded at isolated places over Uttarakhand, Punjab, Haryana, West Madhya Pradesh, Vidarbha, Sub-Himalayan West Bengal, Madhya Maharashtra, Kerala, Karnataka, Assam and Mizoram.

For more details of realised weather, kindly refer [Annexure I](#).

i. Weather Systems, Forecast and Warnings (refer to Annexure II & III):

- ❖ The Monsoon trough runs south of its normal position.
- ❖ Yesterday's **Low-Pressure** area over northwest Bay of Bengal off Odisha coast intensified into a **Well Marked low Pressure Area** at 0530 hrs IST of today and persisted over the same region at 0830 hrs IST of today, the 27th August 2025. It is likely to move slowly west-northwestwards across Odisha during next 24 hours.
- ❖ A **Western Disturbance** as a **cyclonic circulation** over north Pakistan at middle tropospheric levels.
- ❖ An **upper air cyclonic circulation** lay over south Punjab and a **trough** runs from central Madhya Pradesh to the **upper air cyclonic circulation** over south Punjab at lower tropospheric levels.

Under the influence of these systems, the following weather is likely:

East & Central India:

- ❖ Isolated **heavy rainfall** likely over Chhattisgarh, Odisha, Vidarbha, Madhya Pradesh, Sub-Himalayan West Bengal & Sikkim during 27th-30th; Bihar during 30th August-01st September; Jharkhand on 29th & 30th August with isolated **very heavy rainfall over Chhattisgarh on 27th & 28th; Odisha on 27th August.**
- ❖ Light to moderate rainfall at most/many places accompanied with thunderstorm & lightning likely over the region during next 7 days.

South Peninsular India:

- ❖ **Extremely heavy rainfall** likely over Coastal Karnataka and Telangana on 27th August.
- ❖ Isolated **heavy rainfall** likely over Coastal Andhra Pradesh & Yanam, Telangana, Kerala & Mahe, Tamil Nadu during 27th-29th; Interior Karnataka on 27th & 28th; Rayalaseema on 27th and Coastal Karnataka during 27th August-02nd September with **very heavy rainfall** over Coastal Karnataka on 27th & 28th; Coastal Andhra Pradesh & Yanam, Telangana, Kerala on 27th August.
- ❖ Light to moderate rainfall at some places accompanied with thunderstorm & lightning likely over the region during next 2-3 days.

West India:

- ❖ **Isolated heavy rainfall** is very likely over Gujarat region, Konkan & Goa, Madhya Maharashtra during next 7 days and Marathawada on 28th August with **very heavy rainfall** over Konkan on 27th; ghat areas of Madhya Maharashtra on 27th & 28th August.
- ❖ Light to moderate rainfall at most/many places very likely over the region during next 7 days.

Northwest India:

- ❖ Isolated **heavy rainfall** likely to continue over Uttarakhand, Himachal Pradesh, East Rajasthan, Haryana during next 7 days; Jammu & Kashmir, Punjab on 27th, during 30th August-01st September; West Rajasthan during 29th - 31st August; Uttar Pradesh on 01st & 02nd September with **isolated very heavy rainfall over Uttarakhand on 28th & 29th August, 01st & 02nd September.**
- ❖ Light/moderate rainfall at most/many places over Northwest India and accompanied with thunderstorm & lightning likely over the Jammu-Kashmir-Ladakh-Gilgit-Baltistan-Muzaffarabad, West Rajasthan on 27th & 28th August; Uttarakhand during next 7 days.

Northeast India:

- ❖ Isolated **heavy rainfall** likely to continue over Arunachal Pradesh during 28th-30th August; Assam & Meghalaya, Nagaland, Manipur, Mizoram & Tripura during next 7 days.
- ❖ Light/moderate rainfall at many places accompanied with thunderstorm & lightning likely during next 5 days.

Fishermen warning:

Fishermen are advised not to venture into the following from 27th August to 01st September 2025 to the following Areas:

Arabian Sea:

Along and off the Somalia, Oman coasts and adjoining sea areas during 27th August to 01st September; over most parts of central Arabian Sea and adjoining areas of southwest Arabian Sea during 28th August to 01st September; over entire central Arabian Sea and adjoining areas of southwest, north Arabian Sea on 27th August; over Lakshadweep, Comorin areas; along and off south Gujarat coast; Konkan, Goa, Karnataka, Kerala coasts during 27th to 29th August.

Bay of Bengal:

over many parts of north and adjoining central Bay of Bengal Along and off Andhra Pradesh, Odisha, West Bengal, Bangladesh coasts during 27th to 29th August, off Odisha coast on 29th & 01st September; along and off north Andhra Pradesh coast; over few parts of north, many parts of central Bay of Bengal, many parts of southwest Bay of Bengal on 29th August; few parts of northwest, some parts of westcentral, Bay of Bengal during 30th August to 01st September, most parts of southwest Bay of Bengal during 28th August to 01st September; few parts of southeast Bay of Bengal on 27th August to 01st September and over Gulf of Mannar during 27th to 30th August and on 01st September.

ii. Weather conditions and forecast over Delhi/NCR during 27th to 30th August, 2025 (Annexure IV)

For more details, kindly refer National Weather Bulletin:

https://mausam.imd.gov.in/responsive/all_india_forecast_bulletin.php

For District wise warnings refer: <https://mausam.imd.gov.in/responsive/districtWiseWarningGIS.php>

For Fishermen warning refer <https://rsmcnewdelhi.imd.gov.in/fishermen-warning.php>

Rainfall recorded (in cm) during past 24 hours till 0830 hours IST of today, the 27th August:

Jammu: Udhampur IAF-63, Jammu-38; Samba-17, Kathua-12

Telangana: Yellareddy (dist Kamareddy), Naga Reddipet (dist Kamareddy) 25 Each; Bhiknur (dist Kamareddy) 22; Nizam Sagar (dist Kamareddy) 21; Bhuvanagiri (dist Y. Bhuvanagiri) 19; Domakonda (dist Kamareddy), Papannapet (dist Medak) 18 Each; Ramayampet (dist Medak) 17; Pitlam (dist Kamareddy), Medak (dist Medak) 15 Each; Alladurg (dist Medak) 14; Yadagirigutta (dist Y. Bhuvanagiri) 13; Lingampet (dist Kamareddy) 12; Regode (dist Medak), Yadagirigutta(ARG) (dist Y. Bhuvanagiri) 11 Each; Chegunta (dist Medak), Narsapur (dist Medak), Tekmal (dist Medak) 10 Each; Jagadevpur (dist Siddipet), Nagireddypet AP (dist Kamareddy), Ars Basanthpur AP (dist Medak) 9 Each; Narayankhed (dist Sangareddy), Banswada (dist Kamareddy), Doultabad (dist Siddipet) 8 Each; Ramannapeta (dist Y. Bhuvanagiri), Gandhari (dist Kamareddy), Mominpet (dist Vikarabad), Mahbubnagar (dist Mahabubnagar), Nawabpet (dist Vikarabad), Kamareddy (dist Kamareddy), Kowdipalle (dist Medak), Hathanoora (dist Sangareddy), Munipalli (dist Sangareddy), Chilkur (dist Suryapet), Koilkonda (dist Mahabubnagar), Bhoonthpur (dist Mahabubnagar) 7 Each;

East Rajasthan: Bhungra SR (dist Banswara) 22; Kathumer (dist Alwar) 9; Dhariabad (dist Pratapgarh) 7;

Chhattisgarh: Sukma (dist Sukma) 21; Bastanar (dist Bastar) 20; Lohandiguda (dist Bastar) 19; Darbha (dist Bastar) 17; Konta (dist Sukma), Gidam (dist Dantewada) 16 Each; Katekalyan (dist Dantewada), Nangur (dist Bastar), Bade Bacheli (dist Dantewada) 15 Each; Gadiras (dist Sukma) 14; Tokapal (dist Bastar), Chhotedongar (dist Narayanpur) 12 Each; Dantewara (dist Dantewada), Kuakonda (dist Dantewada), Patan (dist Durg) 10 Each; Jagdalpur (dist Bastar), Dornapal (dist Sukma), Jagargunda (dist Sukma) 8 Each; Durg (dist Durg), Gundardehi (dist Balod), Bastar (dist Bastar), Bakavand (dist Bastar), Orcha (dist Narayanpur), Chhindgarh (dist Sukma), Gangalur (dist Bijapur), Bhanpuri (dist Bastar), Karpawand (dist Bastar) 7 Each;

Coastal Karnataka: Kadra (dist Uttara Kannada) 19; Siddapura (dist Udupi), Gersoppa (dist Uttara Kannada) 10 Each; Bantwal (dist Dakshina Kannada), Karkala (dist Udupi), Shirali PTO (dist Uttara Kannada) 8 Each; Joida (dist Uttara Kannada), Karwar (dist Uttara Kannada), Ankola (dist Uttara Kannada), Uppinangadi (dist Dakshina Kannada) 7 Each;

Odisha: Jeypore (dist Koraput) 19; Kotpad (dist Koraput) 16; Borigumma (dist Koraput) 15; Koraput (dist Koraput), Lamataput (dist Koraput), Nandapur (dist Koraput), Nandahandi (dist Nawarangpur) 12 Each; Similiguda (dist Koraput) 11; Malkangiri (dist Malkangiri) 9; Rajkishorenagar (dist Angul), Korukunda (dist Malkangiri) 7 Each;

Konkan & Goa: Quepem (dist South Goa) 13; Kankavli (dist Sindhudurg) 11; Canacona (dist South Goa) 10; Ponda (dist North Goa), Pernem (dist North Goa), Margao (dist South Goa), Rajapur (dist Ratnagiri) 8 Each; Sawantwadi (dist Sindhudurg) 7;

Vidarbha: Sindewahi (dist Chandrapur) 11; Chimur (dist Chandrapur) 8;

Kerala & Mahe: Kudulu (dist Kasargod) 10; Muliya AWS (dist Kasargod) 9; Madikkai AWS (dist Kasargod) 8; Kodungallur (dist Thrissur) 7;

Madhya Maharashtra: Gaganbawada (dist Kolhapur) 10; Mahabaleshwar (dist Satara) 7;

West Madhya Pradesh: Sanjeet (dist Mandsaur) 10; Suvasara (dist Mandsaur) 8; Sailana (dist Ratlam), Khalwa (dist Khandwa) 7 Each;

Punjab: Gurdaspur AMFU (dist Gurdaspur) 10; Dhariwal Irr (dist Gurdaspur) 9; Tibri (dist Gurdaspur), Aliwal (dist Gurdaspur) 8 Each;

Haryana: Guhla (dist Kaithal) 10; Sampla (dist Rohtak), Jhirka (dist Nuh), Barwala REV (dist Hisar), Palhawas REV (dist Rewari), Jakhal Mandi Hmo (dist Fatehabad), Bawal AWS (dist Rewari) 7 Each;

Sub Himalayan West Bengal & Sikkim: Barobhisha (dist Alipurduar) 10; Raidak Tea Estate (dist Alipurduar) 7;

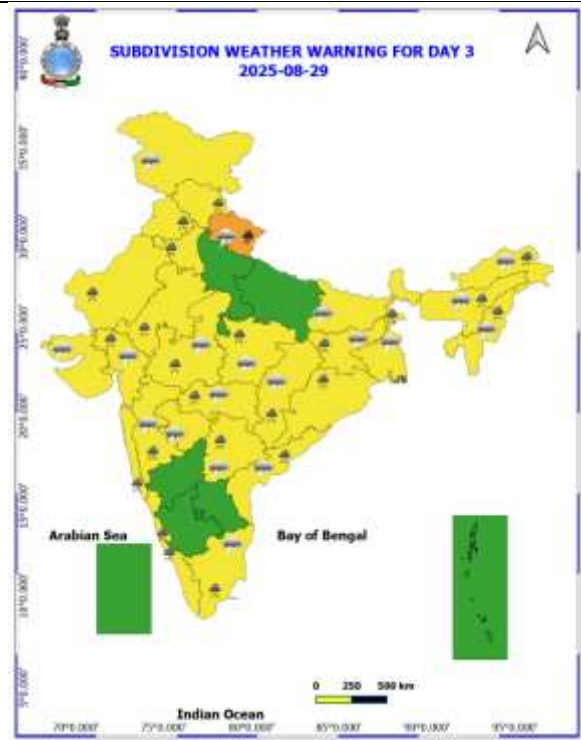
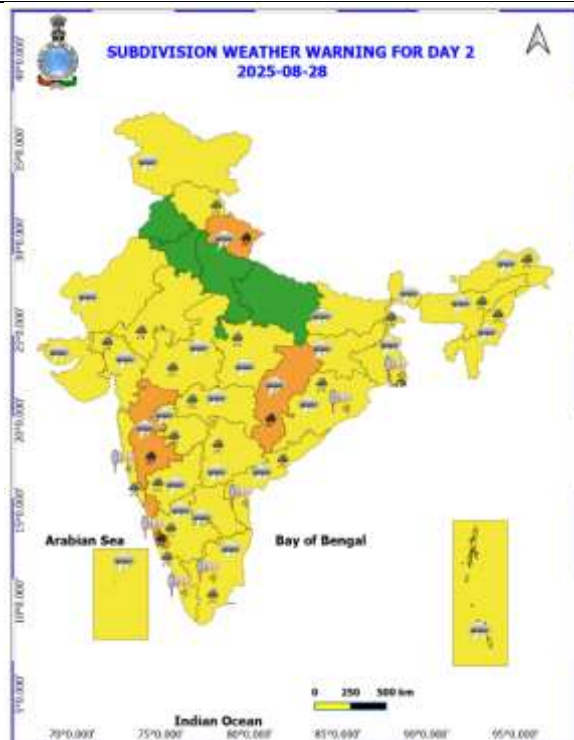
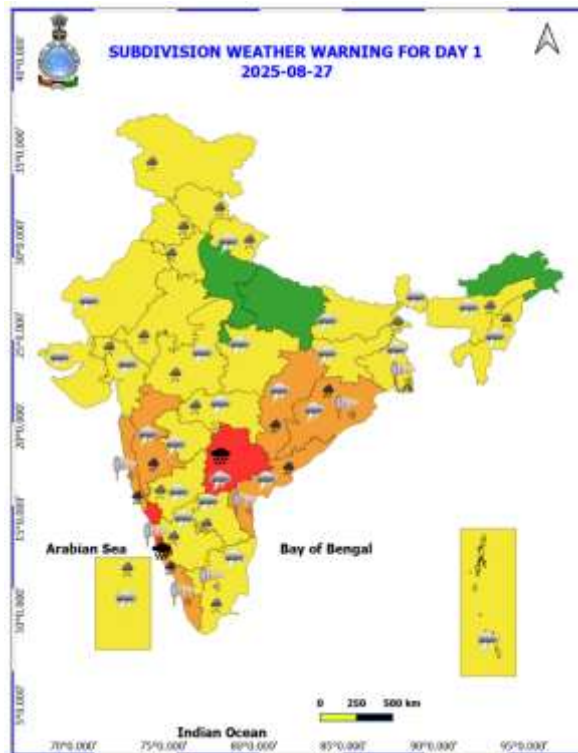
North Interior Karnataka: Bhalki (dist Bidar) 8; Bidar (dist Bidar), Bidar PTO (dist Bidar) 7 Each;

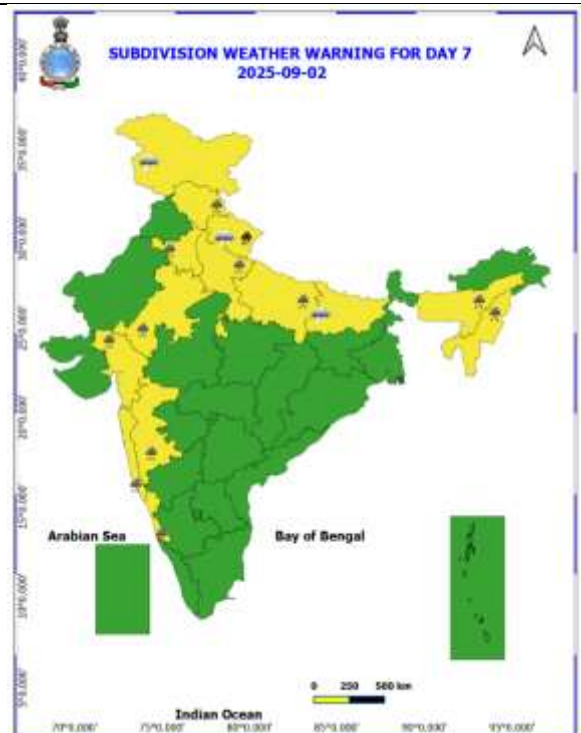
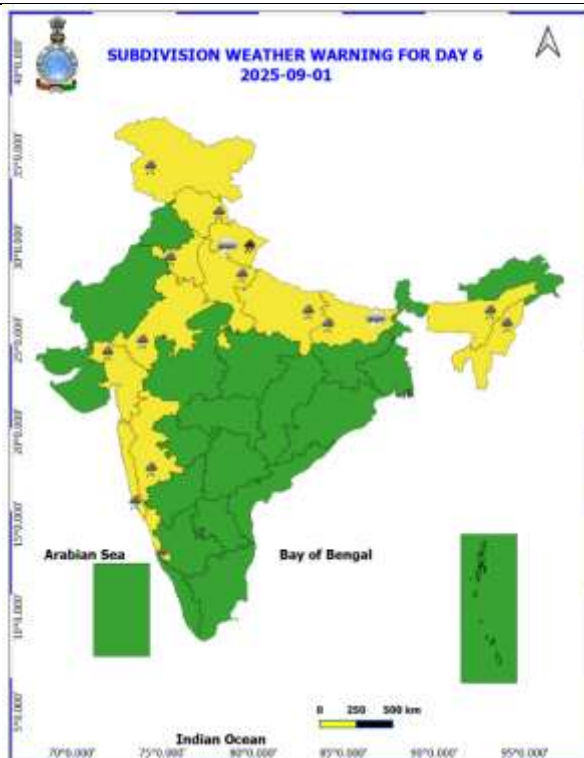
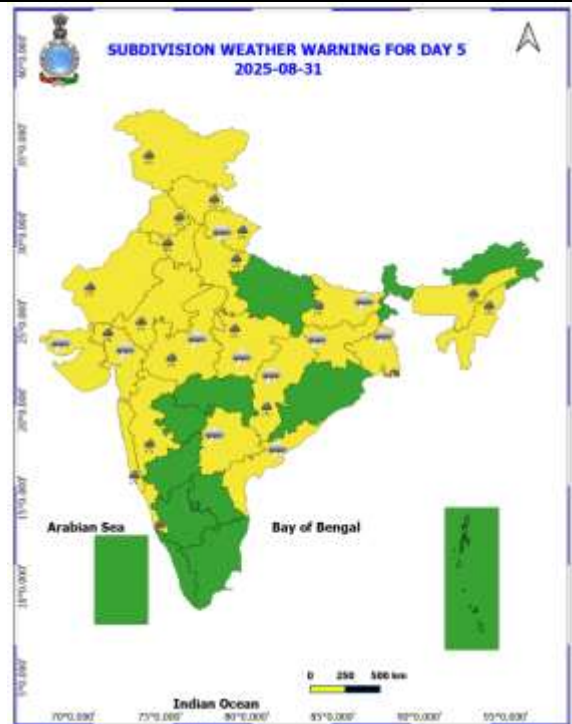
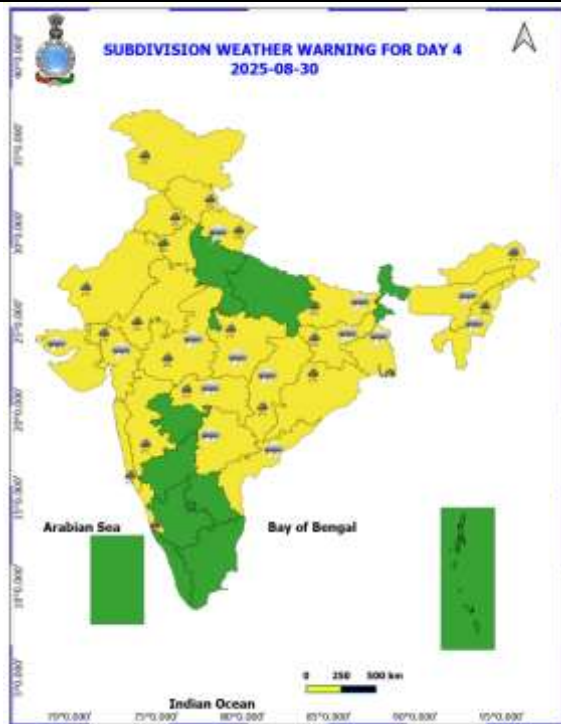
Assam & Meghalaya: Lanka ARG (dist Nagaon) 8; Jiagaon (dist Tinsukia) 7;

Mizoram: Kolasib AWS (dist Kolasib), Khowai (dist Khowai) 7 Each.

Table-1								
7 Days Rainfall Forecast								
S.No.	Subdivision	27- Aug	28- Aug	29- Aug	30- Aug	31- Aug	1- Sep	2- Sep
		Day 1	Day 2	Day 3	Day 4	Day 5	Day 6	Day 7
1	ANDAMAN & NICOBAR ISLANDS	FWS	FWS	FWS	WS	WS	WS	WS
2	ARUNACHAL PRADESH	SCT	FWS	WS	FWS	SCT	SCT	SCT
3	ASSAM & MEHGHALAYA	FWS	WS	WS	FWS	FWS	SCT	SCT
4	NAGALAND, MANIPUR, MIZORAM AND TRIPURA	SCT	FWS	FWS	FWS	FWS	FWS	SCT
5	SUB HIMALAYAN WEST BENGAL & SIKKIM	WS	WS	WS	WS	FWS	FWS	FWS
6	GANGETIC WEST BENGAL	FWS	FWS	FWS	WS	FWS	FWS	FWS
7	ODISHA	WS	WS	FWS	FWS	FWS	SCT	SCT
8	JHARKHAND	ISOL	SCT	FWS	WS	WS	WS	FWS
9	BIHAR	ISOL	SCT	SCT	FWS	FWS	FWS	SCT
10	EAST UTTAR PRADESH	ISOL	ISOL	ISOL	SCT	SCT	FWS	SCT
11	WEST UTTAR PRADESH	ISOL	ISOL	SCT	FWS	FWS	WS	FWS
12	UTTARAKHAND	FWS	WS	WS	WS	WS	WS	WS
13	HARYANA, CHANDIGARH & DELHI	SCT	SCT	FWS	FWS	FWS	FWS	FWS
14	PUNJAB	SCT	SCT	FWS	FWS	FWS	SCT	SCT
15	HIMACHAL PRADESH	SCT	FWS	WS	WS	WS	WS	FWS
16	JAMMU AND KASHMIR AND LADAKH	FWS	SCT	SCT	SCT	SCT	SCT	SCT
17	WEST RAJASTHAN	SCT	SCT	SCT	FWS	FWS	FWS	SCT
18	EAST RAJASTHAN	FWS	FWS	FWS	FWS	WS	WS	FWS
19	WEST MADHYA PRADESH	FWS	FWS	FWS	WS	WS	WS	WS
20	EAST MADHYA PRADESH	FWS	FWS	WS	WS	WS	WS	WS
21	GUJRAT REGION	WS	WS	WS	WS	WS	WS	WS
22	SAURASHTRA & KUTCH	SCT	SCT	FWS	FWS	FWS	FWS	SCT
23	KONKAN & GOA	WS	WS	WS	WS	WS	WS	WS
24	MADHYA MAHARASHTRA	FWS	FWS	FWS	SCT	SCT	SCT	SCT
25	MARATHWADA	FWS	FWS	SCT	ISOL	ISOL	ISOL	ISOL
26	VIDARBHA	WS	WS	WS	FWS	FWS	SCT	SCT
27	CHHATTISGARH	WS	WS	WS	WS	WS	FWS	FWS
28	COASTAL ANDHRA PRADESH	WS	FWS	SCT	SCT	SCT	SCT	SCT
29	TELANGANA	WS	WS	FWS	SCT	SCT	SCT	ISOL
30	RAYALASEEMA	WS	SCT	ISOL	ISOL	ISOL	ISOL	ISOL
31	TAMILNADU & PUDUCHERRY	SCT	ISOL	ISOL	ISOL	ISOL	ISOL	ISOL
32	COSTAL KARNATAKA	WS	WS	WS	WS	WS	WS	WS
33	NORTH INTERIOR KARNATAKA	WS	WS	FWS	SCT	SCT	SCT	SCT
34	SOUTH INTERIOR KARNATAKA	WS	FWS	FWS	SCT	SCT	ISOL	ISOL
35	KERALA AND MAHE	WS	WS	WS	FWS	FWS	FWS	FWS
36	LAKSHADWEEP	WS	WS	WS	FWS	FWS	SCT	SCT

- As the lead period increases forecast accuracy decrease.





- Action may be taken based on ORANGE AND REDCOLOUR warnings.
- Vulnerable regions likely urban and hilly areas action may be initiated for heavy rainfall warning.
- As the lead period increases forecast accuracy decreases.

Detailed districtwise Multi Hazard weather warning for next five days available at
<https://mausam.imd.gov.in/responsive/districtWiseWarningGIS.php>

Weather forecast over Delhi/NCR during 27th to 30th August 2025**Past Weather:**

There has been no large change in the minimum temperature and rise in maximum temperature up to 1 - 2°C over Delhi/NCR during the past 24 hours. The maximum and minimum temperatures over Delhi were around 30 to 31°C and 24 to 25°C respectively. The minimum temperature was below normal up to 1 – 2°C and maximum temperature was below normal up to 2 – 4°C. Generally cloudy sky conditions with predominant surface wind from the northeast/east direction with wind speeds up to 18 kmph prevailed during the past 24 hours. Very light to light rain/thundershowers at most places has been recorded in Delhi. Generally cloudy sky conditions with a wind speed of less than 16 kmph from the southeast direction prevailed over the region in the forenoon today.

Weather Forecast:

27.08.2025: Generally cloudy sky. One or two spells of very light to light rain/thundershowers at many places with moderate rain at isolated places during afternoon/evening. The maximum temperatures over Delhi are likely to be in the range of 29 to 31°C. The maximum temperature will be below normal up to 3 to 5°C. The predominant surface wind will likely be from the southeast direction with a wind speed of up to 10-15 kmph during the afternoon hours. The wind speed will decrease becoming less than 12 kmph from the southeast direction during the evening and night.

28.08.2025: Generally cloudy sky. One or two spells of very light to light rain/thundershowers at many places during afternoon/evening. The maximum and minimum temperatures over Delhi are likely to be in the range of 31 to 33°C and 23 to 25°C respectively. The minimum temperature will be below normal up to 1 to 2°C and the maximum temperature will be below normal up to 1 to 2°C. The predominant surface wind will likely to be from the southeast direction with a wind speed of up to 10 - 15 kmph during morning hours. The wind speed will gradually increase becoming less than 18 kmph from the southeast direction in the afternoon. The wind speed will decrease becoming less than 15 kmph from the southeast direction during the evening and night.

29.08.2025: Generally cloudy sky. Possibility of very light to light rain/ thundershowers. The maximum and minimum temperatures over Delhi are likely to be in the range of 30 to 32°C and 23 to 25°C respectively. The minimum temperature will be below normal up to 1 to 2°C and the maximum temperature will be below normal up to 2 to 4°C. The predominant surface wind will likely to be from the southeast direction with a wind speed of up to 10-15 kmph during morning hours. The wind speed will gradually increase becoming less than 20 kmph from the southeast direction in the afternoon. The wind speed will decrease becoming less than 16 kmph from the southeast direction during the evening and night.

30.08.2025: Generally cloudy sky. Possibility of very light to light rain/thundershowers. The maximum and minimum temperatures over Delhi are likely to be in the range of 30 to 32°C and 22 to 24°C respectively. The minimum temperature will be below normal up to 2 to 4°C and the maximum temperature will be below normal up to 2 to 4°C. The predominant surface wind will likely be from the southeast direction with a wind speed of less than 15 kmph during the morning hours. The wind speed will gradually decrease becoming less than 12 kmph from the southeast direction in the afternoon. The wind speed will increase becoming less than 16 kmph from the southeast direction during the evening and night.

Impact expected and Action Suggested due to light to moderate rainfall with thundershowers:

- Damage to standing crops, Minor to major damage to power and communication lines due to breaking of branches, Partial damage to vulnerable structures due to strong winds, Loose objects may fly.
- People are advised to keep a watch on the weather for worsening conditions and be ready to move to safer places accordingly, stay indoors, close windows & doors and avoid travel if possible, take safe shelters; do not take shelter under trees, do not lie on concrete floors and do not lean against concrete walls, unplug electrical/ electronic appliances, immediately get out of water bodies, keep away from all the objects that conduct electricity.

Impact & Action Suggested due to

- ❖ **Isolated Extremely heavy rainfall** likely over Coastal Karnataka and Telangana on 27th August.
- ❖ **Isolated very heavy rainfall** over Chhattisgarh, Coastal Karnataka, ghat areas of Madhya Maharashtra on 27th & 28th; Odisha, Coastal Andhra Pradesh & Yanam, Telangana, Kerala, Konkan on 27th, Uttarakhand on 28th & 29th August, 01st & 02nd September.

Impact Expected

- Localized Flooding of roads, water logging in low lying areas and closure of underpasses mainly in urban areas of the above region.
- Occasional reduction in visibility due to heavy rainfall.
- Disruption of traffic in major cities due to water logging in roads leading to increased travel time.
- Minor damage to kutcha roads.
- Possibilities of damage to vulnerable structure.
- Localized Landslides/Mudslides/landslips/mudslips/landsinks/mudsinks.
- Damage to horticulture and standing crops in some areas due to inundation.
- It may lead to riverine flooding in some river catchments (for riverine flooding please visit Web page of CWC)

Action Suggested

- Check for traffic congestion on your route before leaving for your destination.
- Follow any traffic advisories that are issued in this regard.
- Avoid going to areas that face the water logging problems often.
- Avoid staying in vulnerable structure.

Agromet advisories for likely impact of Heavy / Heavy to Very Heavy / Extremely Heavy Rainfall

- In **Jammu and Kashmir**, drain out excess rain water from fields of rice, maize, pulses and vegetables in **Sub Tropical Zone** and maize, *kharif* pulses, rice and vegetables in **Intermediate Zone**. In **Valley Temperate Zone**, ensure proper drainage in fields of maize, kidney beans and vegetables and maintain a thin layer of water in rice fields.
- In **Himachal Pradesh**, maintain proper drainage channels in ginger, turmeric and maize fields in **Mid Hills Sub Humid Zone** and rice, maize and vegetable fields in **Sub Montane and Low Hills Sub Tropical Zone**. In **High Hills Sub Temperate Wet Zone**, postpone transplanting of cauliflower, cabbage and broccoli seedlings and make proper drainage channels in fields of maize, finger millet and vegetables to avoid water stagnation.
- In **Uttarakhand**, maintain proper drainage channels in fields of barnyard millet, finger millet and green gram in **Sub Humid Sub Tropic Zone** and rice, green gram, black gram, sugarcane, maize, groundnut, finger millet and vegetables in **Bhabar and Tarai Zone**. In **Hill Zone**, postpone sowing of vegetable pea and radish and provide proper drainage in fields of finger millet and kidney beans.
- In **Punjab**, drain out excess water from fields of sugarcane and green gram and maintain proper drainage in chilli fields and remove stagnant rainwater immediately after rainfall in **Undulating Plain Zone**.
- In **Haryana**, to prevent waterlogging make arrangements to drain out excess water from fields of cotton, pearl millet, green gram and cluster bean in **Western Zone** and sugarcane, cotton, maize, pearl millet and vegetables in **Eastern Zone**.
- In **Odisha**, make provision for draining out excess rain water from fields of rice, black gram, green gram, pigeon pea, **maize, groundnut and vegetables in Eastern Ghat High Land Zone and South Eastern Ghat Zone** and rice, maize, pigeon pea, and vegetables in **North Eastern Ghat Zone**.
- In **Chhattisgarh**, ensure proper drainage in fields of rice, minor millets, maize, pulses and oilseeds in **Bastar Plateau Zone** and groundnut, black gram, soybean, pigeon pea and vegetables in **Chattisgarh Plain Zone**.
- In **Kerala**, ensure adequate drainage facilities in rice nursery and standing crop fields. Provide support to banana plants.
- In **Karnataka**, provide adequate drainage facilities in rice fields and plantations of arecanut and banana in **Coastal Zone** and fields of rice, maize, cotton, ginger and plantations of arecanut in **Hill Zone**.

- In **Coastal Andhra Pradesh**, make arrangements for draining excess water from fields of maize, green gram, groundnut, mesta and cotton in **North Coastal Zone** and maize, groundnut, finger millet, ginger, turmeric and vegetables in **High Altitude Tribal Zone**.
- In **Telangana**, drain out excess water from fields of rice, cotton, maize, soybean, pigeon pea, turmeric and vegetables in **Northern Telangana Zone** and rice, cotton, soybean, maize and pigeon pea in **Southern Telangana Zone**.
- In **Maharashtra**, make arrangements to drain out excess water from fields of rice, finger millet, turmeric, groundnut, vegetables and fruit orchards in **Konkan**; rice, maize, groundnut, soybean, vegetable fields and fruit orchards in *ghat* areas of Madhya Maharashtra and rice, cotton, pigeon pea, soybean, vegetables and fruit orchards in **East Vidarbha**.

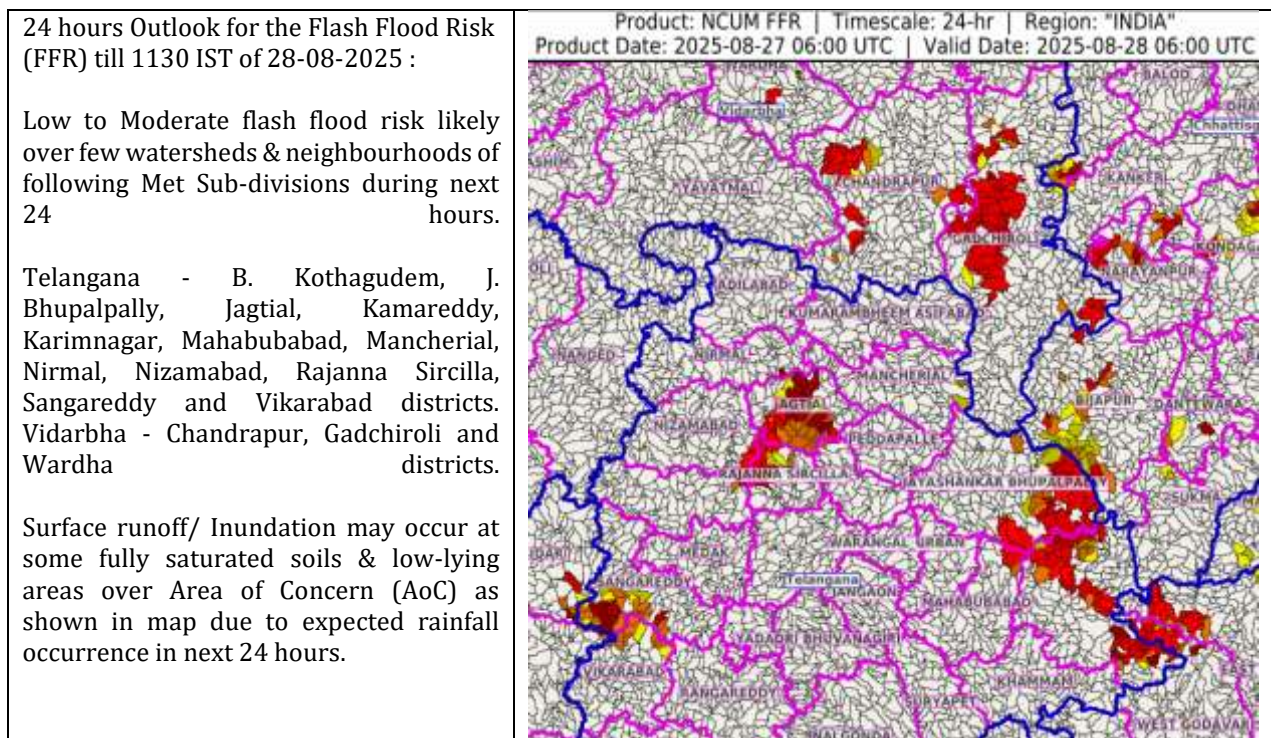
Livestock / Fishery

- Keep the animals inside the shed during heavy rainfall and provide them balanced feed.
- Store feed and fodder in a safe place to prevent spoilage.
- Construct an outlet with proper netting around the ponds to drain out excess water, thereby preventing fish from escaping in case of overflow.

Agromet advisories for likely impact of Thunderstorm / Gusty Winds / Squally Winds (Based on the IBF and advisories issued by different AMFUs)

- Provide mechanical support to horticultural crops and staking or support to vegetables and young fruit plants / fruit-bearing plants to avoid lodging due to strong winds.

Flash flood guidance:

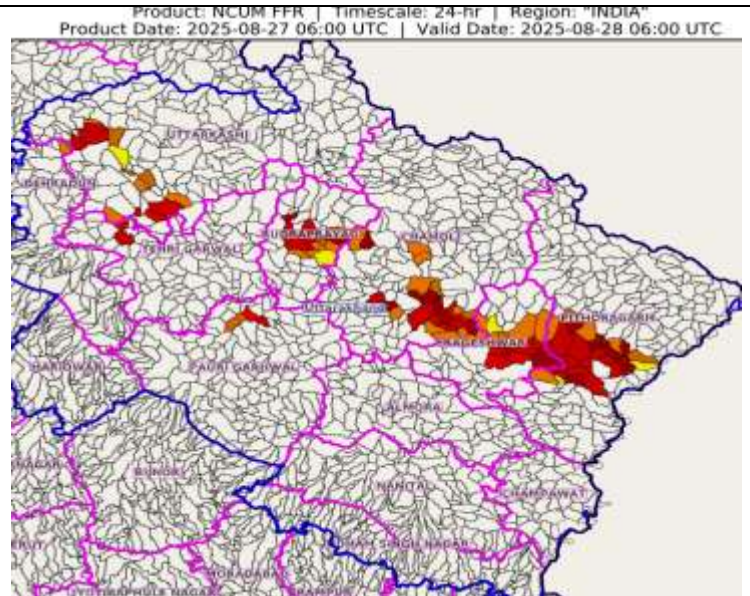


24 hours Outlook for the Flash Flood Risk (FFR) till 1130 IST of 28-08-2025 :

Low to Moderate flash flood risk likely over few watersheds & neighbourhoods of following Met Sub-divisions during next 24 hours.

Uttarakhand - Bageshwar, Chamoli, Pauri Garhwal, Pithoragarh, Rudrapur, Tehri Garwal and Uttarkashi districts.

Surface runoff/ Inundation may occur at some fully saturated soils & low-lying areas over Area of Concern (AoC) as shown in map due to expected rainfall occurrence in next 24 hours.



Legends & abbreviations:

- ❖ **Heavy Rain:**64.5-115.5mm; **Very Heavy Rain:**115.6-204.4mm; **Extremely Heavy Rain:** >204.4mm.
- ❖ **Obsy:** Observatory; Automatic Weather Station; **ARG:** Automatic Rain Gauge; **dist:** District; **NH:** National Highway; **KVK:** Krishi Vigyan Kendra; **DVC:** Damodar Valley Corporation; **PTO:** Part Time Office, **Aero:** Aerodrome, **IAF:** Indian Air Force.
- ❖ **Region wise classification of meteorological Sub-Divisions:**
 - **Northwest India:** Western Himalayan Region (Jammu-Kashmir-Ladakh-Gilgit-Baltistan-Muzaffarabad, Himachal Pradesh and Uttarakhand); Punjab, Haryana-Chandigarh-Delhi; West Uttar Pradesh, East Uttar Pradesh, West Rajasthan and East Rajasthan.
 - **Central India:** West Madhya Pradesh, East Madhya Pradesh, Vidarbha and Chhattisgarh.
 - **East India:** Bihar, Jharkhand, Sub-Himalayan West Bengal & Sikkim; Gangetic West Bengal, Odisha and Andaman & Nicobar Islands.
 - **Northeast India:** Arunachal Pradesh, Assam & Meghalaya and Nagaland, Manipur, Mizoram & Tripura.
 - **West India:** Gujarat Region, Saurashtra & Kutch, Konkan & Goa, Madhya Maharashtra and Marathwada.
 - **South India:** Coastal Andhra Pradesh & Yanam, Telangana, Rayalaseema, Coastal Karnataka, North Interior Karnataka, South Interior Karnataka, Kerala & Mahe, Tamil Nadu, Puducherry & Karaikal and Lakshadweep.

LEGENDS

1. अंडमान और निकोबार द्वीपसमूह

2. अरुणाचल प्रदेश

3. असम और मेघालय

4. नागालैंड, मणिपुर, मिजोरम और त्रिपुरा

5. उप-हिमालयी पश्चिम बंगाल और सिक्किम

6. गंगीय पश्चिम बंगाल

7. ओडिशा

8. झारखंड

9. बिहार

10. पूर्वी उत्तर प्रदेश

11. पश्चिम उत्तर प्रदेश

12. उत्तराखंड

13. हरियाणा, चंडीगढ़ और दिल्ली

14. पंजाब

15. हिमाचल प्रदेश

16. जम्मू और कश्मीर और लद्दाख

17. पश्चिम राजस्थान

18. पूर्वी राजस्थान

19. पश्चिम मध्य प्रदेश

20. पूर्वी मध्य प्रदेश

21. गुजरात

22. सौराष्ट्र

23. कोंकण और गोवा

24. मध्य महाराष्ट्र

25. मराठवाड़ा

26. विदर्भ

27. छत्तीसगढ़

28. तटीय आंध्र प्रदेश और यनम

29. तेलंगाना

30. रायलसीमा

31. तमिलनाडु, पुडुचेरी और कराईकल

32. तटीय कर्नाटक

33. आंतरिक उत्तरी कर्नाटक

34. आंतरिक दक्षिणी कर्नाटक

35. केरल और माहे

36. लक्षद्वीप



1. Andaman & Nicobar Islands

2. Arunachal Pradesh

3. Assam & Meghalaya

4. Nagaland, Manipur, Mizoram & Tripura

5. Sub-Himalayan West Bengal & Sikkim

6. Gangetic West Bengal

7. Odisha

8. Jharkhand

9. Bihar

10. East Uttar Pradesh

11. West Uttar Pradesh

12. Uttarakhand

13. Haryana, Chandigarh & Delhi

14. Punjab

15. Himachal Pradesh

16. Jammu & Kashmir and Ladakh

17. West Rajasthan

18. East Rajasthan

19. West Madhya Pradesh

20. East Madhya Pradesh

21. Gujarat

22. Saurashtra

23. Konkan & Goa

24. Madhya Maharashtra

25. Marathwada

26. Vidarbha

27. Chhattisgarh

28. Coastal Andhra Pradesh & Yanam

29. Telangana

30. Rayalaseema

31. Tamilnadu, Puducherry & Karaikal

32. Coastal Karnataka

33. North Interior Karnataka

34. South Interior Karnataka

35. Kerala & Mahe

36. Lakshadweep

SPATIAL DISTRIBUTION (% of Stations reporting)

% Stations	Category	% Stations	Category
76-100	Widespread (WS/Most Places)	26-50	Scattered (SCT/A Few Places)
51-75	Fairly Widespread (FWS/Many Places)	1-25	Isolated (ISOL)



Fog



Heavy Snow



Cold Wave



Heavy Rain



Dust Storm



Cold Day



Very Heavy Rain



Heat Wave



Ground Frost



Extremely Heavy Rain



Warm Night



Thunder & Lightning



Hot Day



Hailstorm



Hot & Humid



Dust Raising Winds



Strong Surface Winds

COLOUR CODED WARNING

No Warning (No Action)

Watch (Be Aware)

Alert (Be Prepared To Take Action)

Warning (Take Action)

Probabilistic Forecast

Terms	Probability of Occurrence (%)
Unlikely	< 25
Likely	25 - 50
Very Likely	50 - 75
Most Likely	> 75

* Red colour warning does not mean "Red Alert", Red colour warning means "Take Action".

Forecast and Warning for any day is valid from 0830 hours IST of day till 0830 hours IST of next day.

For more details, kindly visit <https://mausam.imd.gov.in> or contact: 011-2434-4599

(Service to the Nation since 1875)

DEFINITION/CRITERIA

Rain/ Snow *

Heavy: 64.5 to 115.5 mm/cm *
Very Heavy: 115.6 to 204.4 mm/cm *
Extremely Heavy: > 204.4 mm/cm *

Heat Wave

When maximum temperature of a station reaches $\geq 40^{\circ}\text{C}$ for plains and $\geq 30^{\circ}\text{C}$ for hilly regions
(a) Based on Departure from normal

Heat Wave: Maximum Temperature Departure from normal 4.5°C to 6.4°C .

Severe Heat Wave: Maximum Temperature Departure from normal $\geq 6.5^{\circ}\text{C}$

(b). Based on Actual maximum temperature

Heat Wave: When actual maximum temperature $\geq 45^{\circ}\text{C}$.

Severe Heat Wave: When actual maximum temperature $\geq 47^{\circ}\text{C}$.

(c). Criteria for heat wave for coastal stations

When maximum temperature departure is $> 4.5^{\circ}\text{C}$ from normal. Heat Wave may be described provided maximum temperature $\geq 37^{\circ}\text{C}$.

Warm Night

When maximum temperature remains 40°C

Warm Night: When minimum temperature departure 4.5°C to 6.4°C .

Severe Warm Night: When minimum temperature departure $> 6.4^{\circ}\text{C}$.

Cold Wave

When minimum temperature of a station $\leq 10^{\circ}\text{C}$ for plains and $\leq 0^{\circ}\text{C}$ for hilly regions.

(a). Based on departure

Cold Wave: Minimum Temperature Departure from normal -4.5°C to -6.4°C .

Severe Cold Wave: Minimum Temperature Departure from normal $\leq -6.5^{\circ}\text{C}$

(b) Based on actual Minimum Temperature (for Plains only)

Cold Wave: When Minimum Temperature is $\leq 4.0^{\circ}\text{C}$

Severe Cold Wave: When Minimum Temperature is $\leq 2.0^{\circ}\text{C}$

(c) For Coastal Stations

When Minimum Temperature departure is $\leq -4.5^{\circ}\text{C}$ & actual Minimum Temperature is $\leq 15^{\circ}\text{C}$

Cold Day

When minimum temperature of a station $\leq 10^{\circ}\text{C}$ for plains and $\leq 0^{\circ}\text{C}$ for hilly regions
Based on departure

Cold Day: Maximum Temperature Departure from normal -4.5°C to -6.4°C .

Severe Cold Day: Maximum Temperature Departure from normal $\leq -6.5^{\circ}\text{C}$

Fog

Phenomenon of small droplets suspended in air and the horizontal visibility $< 1\text{km}$

Moderate Fog: When the visibility between 500-200 metres

Dense Fog: when the visibility between 50- 200 metres

Very Dense Fog: when the visibility < 50 metres

Thunderstorm

Sudden electrical discharges manifested by a flash of light (Lightning) and a sharp rumbling sound (thunder)

Dust/Sand Storm

An ensemble of particles of dust or sand energetically lifted to great heights by a strong and turbulent wind.

Frost

Ice deposits on ground

Air temperature $\leq 4^{\circ}\text{C}$ (over Plains)

Squall

A strong wind that rises suddenly, lasts for atleast 1 minute.

Moderate: Wind speed 52-61 kmph

Severe: Wind speed 62-67 kmph

Very Severe: Wind speed > 67 kmph

Sea State

Effect of various waves in the sea over specific area

Rough to very rough: Wind speed 41-62 kmph (22-33 knots) & Wave height 2.5-6 metre

High to very high: Wind speed 63-117 kmph (34-63 knots) & Wave height 6-14 metre

Phenomenal: Wind speed > 117 kmph (> 63 knots) & Wave height > 14 metre

Cyclone

Cyclonic Storm: Wind speed 62-87 kmph (34-47 knots)

Severe Cyclonic Storm: Wind speed 88-117 kmph (48-63 knots)

Very Severe Cyclonic Storm: Wind speed 118-165 kmph (64 - 89 knots)

Extremely Severe Cyclonic Storm: Wind speed 166-220 kmph (90 -119 knots)

Super Cyclone Storm: Wind speed > 220 kmph (> 119 knots)

* Red colour warning does not mean "Red Alert", Red colour warning means "Take Action".

Forecast and Warning for any day is valid from 0830 hours IST of day till 0830 hours IST of next day.

For more details, kindly visit <https://mausam.imd.gov.in> or contact: 011-2434-4599

(Service to the Nation since 1875)

Hot and Humid: When maximum temperatures remain 3°C above normal along with the above normal relative humidity.